



## F-360R | HIGH SPEED DOUBLE ROTARY TABLET PRESS

49 Stn. 'D' Tooling / 63 Stn. 'B' Tooling / 81 Stn. 'BB' Tooling  
Maximum Output - 7,77,600 Tablets/ Hour  
WITH PRE-COMPRESSION 10 TONS & MAIN COMPRESSION 10 TONS  
WITH INTERCHANGEABLE TURRET  
AUTO WEIGHT THROUGH COMPACTION FORCE CONTROL  
AUTO TABLET REJECTION THROUGH COMPACTION FORCE CONTROL  
21 CFR part 11 compliace



Single Layer



Double Layer

49 Stn. 'D' Tooling / 63 Stn. 'B' Tooling / 81 Stn. 'BB' Tooling  
 Maximum Output - 7,77,600 Tablets / Hour  
 WITH PRE-COMPRESSION 10 TONS & MAIN COMPRESSION 10 TONS  
 WITH INTERCHANGEABLE TURRET  
 AUTO WEIGHT THROUGH COMPACTION FORCE CONTROL  
 AUTO TABLET REJECTION THROUGH COMPACTION FORCE CONTROL  
 21 CFR part 11 compliance

### SALIENT FEATURES

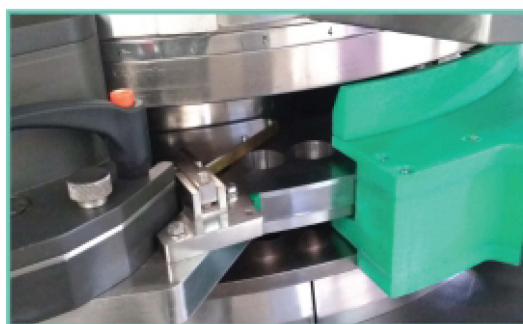
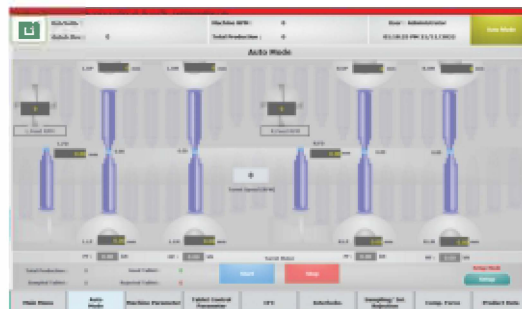
- In Compliance with cGMP & Having center shaft driven turret thru heavy duty oil immersed reduction gear box.
- Specially designed heavy C.I. Structure.
- Vibration free and easy to operate at 80 RPM.
- 3 Piece Turrets with Die - Table SS-316 & Upper & Lower Piece Electro-Less Nickel Plated.
- Motorized Lower Pre-Compression of 10 TONS. (100 KN)
- Motorized Lower Main Compression of 10 TONS. (100 KN)
- Manually Upper Pre & Main Compression.
- Motorized Dozzer, for precise Depth of Fill adjustment for each Layer.
- Zero Clearance, Three Paddles Force Feeding System.
- AC VFD with Electromagnetic clutch.
- Load cell at Pre-Compression & Main Compression
- Lower Punch Stiffness Monitoring with CFC System.
- Ejection Force Monitoring Available with CFC System. (Optional)
- Upper Punch Stiffness Monitoring with CFC System. (Optional)
- Upper Punch Pre & Main Penetration 1mm to 8mm.
- Industrial PC having 15" Color Touch Screen.
- Machine is Four Sided open with Upper Guards.
- Control Panel is Separate.
- With interlock switches to all upper guards.
- Sliding Type Per & Main Upper Pressure Roll Assly.
- With Easy Turret Interchangeable Turret Facility. (Optional)
- Any Turret of D-B-BB Tooling can be fitted.
- Auto Sampling based on, either time or revolution or punch nos.
- Initial Start up & Stop Rejection.
- Auto Weight Control & Single Tablet Rejection Through Compaction Force Control - CFC.
- Fully Computerized PLC Based Industrial Touch Screen Control.
- Encoder System for Better Accuracy
- Powder Level Sensor & Auto Lubrication
- Graphical appearance of the value of pressure on individual punch at pre and main pressure.
- Recipe management & 'n' No. of recipe storage.
- Audit trail reports, and pen drive connectivity with printing facility.
- The after sales, PLC Complaints can be carried out by internet Thru Team Viewer.

### Safe features of F 360R

- Emergency Stops switches for four side of the machine.
- Motors overload precaution.
- AC VFD overload precaution.
- Servo motors movement notification.
- Servo motors safety precaution.
- Fill cam identification.
- Tooling safety features.
- Tablet Rejection control alarm.
- High Tablet rejection notification.
- Guards interlock.
- Lubrication oil level identification.
- Low powder level.
- Encoder position disturb alarm.
- Individual compaction force higher alarm.
- Hand wheel guard notification.
- Feeder jamming sensor.
- Hopper powder level low/feeder powder level sensor.

### Software art of F 360R

- Auto weight control available through Compaction force.
- Multi users password and user authorization.
- Individual users access rights.
- Encoders for counting all the parameters.
- Individual tablet rejection(beyond weight) through compaction force.
- **"accura mode"** for eliminating weight variation at higher speed.
- 15" touch screen IPC for operating system.
- Feeder synchronization.
- Initial tablet rejection during start / stops.
- Production Mode / Set up mode.
- Manual Run/Jog Run / Auto Run.
- Pre compression punch force (Individual station).
- Main Compression punch force (Individual station).
- Auto Sampling Mode.
- Based on Time/Punches or No. of tablets.
- Auto Lubrication.
- Recipe creation/download/Edit option.
- Various type of prints reports.
- Auditable reports and history.
- Individual punch force details.
- Auto printing option.
- Server integration option available.





# F-360R | HIGH SPEED DOUBLE ROTARY TABLET PRESS

49 Stn. 'D' Tooling / 63 Stn. 'B' Tooling / 81 Stn. 'BB' Tooling  
Maximum Output - 7,77,600 Tablets / Hour  
WITH PRE-COMPRESSION 10 TONS & MAIN COMPRESSION 10 TONS  
WITH INTERCHANGEABLE TURRET  
AUTO WEIGHT THROUGH COMPACTION FORCE CONTROL  
AUTO TABLET REJECTION THROUGH COMPACTION FORCE CONTROL  
21 CFR part 11 compliace



Single Layer



Double Layer



# F-360R | HIGH SPEED DOUBLE ROTARY TABLET PRESS

49 Stn. 'D' Tooling / 63 Stn. 'B' Tooling / 81 Stn. 'BB' Tooling  
Maximum Output - 7,77,600 Tablets / Hour  
WITH PRE-COMPRESSION 10 TONS & MAIN COMPRESSION 10 TONS  
WITH INTERCHANGEABLE TURRET  
AUTO WEIGHT THROUGH COMPACTION FORCE CONTROL  
AUTO TABLET REJECTION THROUGH COMPACTION FORCE CONTROL  
21 CFR part 11 compliace



## ADVANCE FEEDING SYSTEM

3 PADDLE FEEDING SYSTEM

EASY TO OPEN, WITHOUT TOOLS

FEEDER POWDER LOW LEVEL ALARM

## SOFT START

- SOFT START PICTURE ROLLS & PUNCHES-TO  
RELEASE OVERLOAD ON PUNCH PRESSURE
- DURING HIGH COMPRESSION FORCE, PRESSURE ROLLS AUTOMATIC  
RELEASE THE PRESSURE
- THIS IMPROVE THE LIFE OF PRESSURE ROLLS TOOLING & MOTOR EFFICIENCY





49 Stn. 'D' Tooling / 63 Stn. 'B' Tooling / 81 Stn. 'BB' Tooling  
Maximum Output - 7,77,600 Tablets / Hour  
WITH PRE-COMPRESSION 10 TONS & MAIN COMPRESSION 10 TONS  
WITH INTERCHANGEABLE TURRET  
AUTO WEIGHT THROUGH COMPACTION FORCE CONTROL  
AUTO TABLET REJECTION THROUGH COMPACTION FORCE CONTROL  
21 CFR part 11 compliance

## PRODUCT SPECIFICATIONS

TYPE	F 360 R - 49	F 360 R - 63	F 360 R - 81
Number of Station	49	63	81
Type of tooling (As Per EU1)	D	B	BB
Output-tablets/hour (Min / Max.)(Single Layer)	58800 / 470400	75600 / 604800	97200 / 777600
Output-tablets/hour (Min / Max.) (Bi-Layer)	29400 / 117600	37800 / 151200	48600 / 194400
Turret RPM (Min./Max.) (Single Layer)	10/80		
Turret RPM (Min./Max.) (Bi-Layer)	10/40		
Max. Operating Pressure-Main (kN)	100		
Max. Operating Pre. Pressure-Tamp. (kN)	100		
Max. Tablet Diameter (mm)	25	16	11
Max. Tablet Thickness (mm)	8.5		
Depth of fill (mm)(With Three Different Lower Track)	4.5 - 108.5 - 1412.5 - 186mm (Bi-Layer)		
Upper punch entry Main (mm)	1 to 8		
Upper punch entry Pre-compression (mm)	1 to 8		
Main Electric Motor (kW/hp)	15kW/20hp x 1440 RPM		
Main Press Roll Servo Motor (kW/hp)	0.75/1.0 x 3000 RPM x 2 Nos. = 1.50 / 2.0 kW/hp		
Pre. Press Roll Servo Motor (kW/hp)	0.75/1.0 x 3000 RPM x 2 Nos. = 1.50 / 2.0 kW/hp		
Weight Adj. Electric Motor (kW/hp)	0.75/1.0x 3000 RPM x 2 Nos. = 1.50 / 2.0 kW/hp		
Feeder Electric Motor (kW/hp)	0.37/0.50 x 1365 RPM x 2 Nos. = 0.74 / 1.0 kW/hp		
Hopper Capacity	18 Litres		
Overall dimensions close guard-cm	185 W x 180 L x 214 H		
Overall dimension Open guard -cm	310 W x 310 L x 214 H		
Case dimensions (cm)	220 W x 220 L x 230 H		
Net weight (kg)	6400 Kg.		
Gross weight(kg)	6800 Kg.		
Utilities :	1) Suction Air :-	300 CFM	
	2) Compressed Air :-	7Kg/Sq.cm (7 Bar)3)	
	Power Supply :-	(a) 415 V, 3 Phase, 50 Hz	
		(b) 480 V, 3 Phase, 60 Hz	
		(c) 220 V, 3 Phase, 60 Hz	
	4) Power-Total (kw/hp) :-	20.24kW / 27 hp	

\* Depending upon material characteristic & available room atmosphere only.

NOTE : DUE TO CONTINUOUS IMPROVEMENTS IN THE MACHINERIES, SPECIFICATION OF THE MACHINERIES IS SUBJECT TO CHANGE WITHOUT ANY PRIOR NOTICE.

Pre-pressure and Main pressure could be changed depending on the size of the compress and filling depth, powder or granulation. It is dependent on the physical specification of the used material for the compress.

The above specification is the subject to change without prior notice for the technical development.

It is Recommended not to use large depth of fill, minimum tablet thickness and maximum compression pressure for maximum performance consistently. Technical rights to change catalogues, specifications and features are reserved with the manufacturer. Actual output may vary against indicated output on the product under compression and RPM on lower side.

